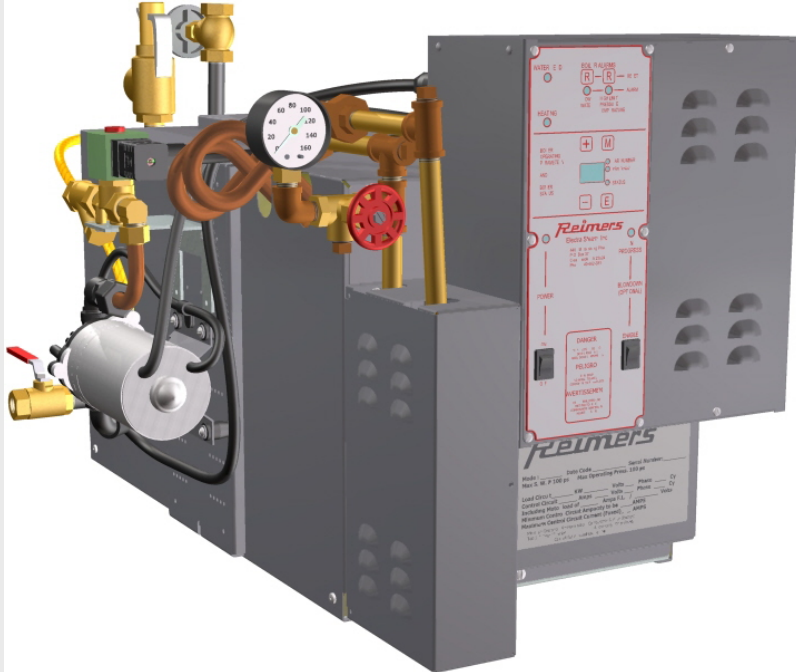


RB10 – 30 Steam Boiler Series



ASME
CSD-1
CRN



Features

- Miniature boiler
Max. vessel volume 1.5ft³
Max. safety valve setting 100psi
- Dry saturated steam, operating pressure range 0 – 85psi
- Very compact design, all controls accessible from boiler front, very suitable for installation in tight spaces such as autoclaves
- Heavy duty carbon steel pressure vessel. Vessel jacket and electrical enclosure 316stainless
- Large selection of optional equipment

Applications

- Autoclaves
- Air Humidification
- Steam Cleaning
- Dry cleaning
- Food service
- Laboratories

Standard equipment of each boiler includes: Low water cutoff control with manual reset, high pressure cutoff control with manual reset, one (1) operating pressure control, high water cut-off control with automatic or manual reset, pressure gauge and safety valve.

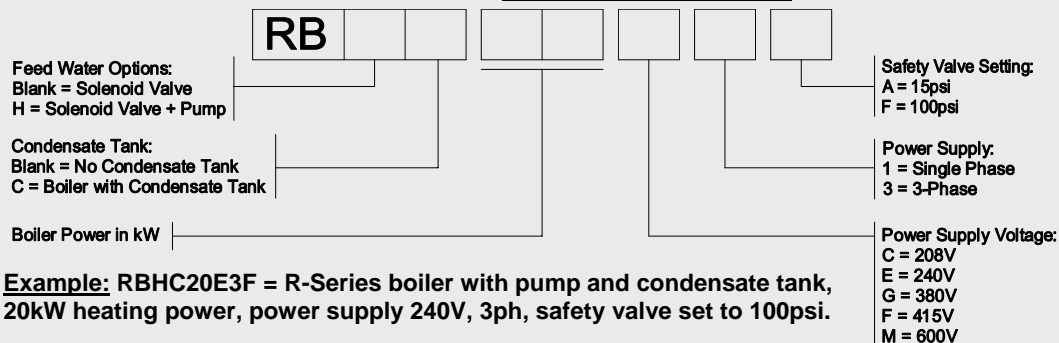
RB-SERIES Steam Boilers										
KW	LB/HR	BHP	VOLTAGE*	PHASE ***	SHIP WT. LB	OP. PRESS. RANGE	MBTU/HR	Steam Outlet (NPT)		
								LP	HP	
10 KW	34	1.0	208/240/380**/415**/480/600	1/3	172	0-85 PSIG	34	3/8	3/8	
18 KW	62	1.8	208/240/380**/415**/480/600	1/3	172	0-85 PSIG	61	3/8	3/8	
20 KW	69	2.0	208/240/380**/415**/480/600	1/3	172	0-85 PSIG	68	3/8	3/8	
25 KW	86	2.5	208/240/380**/415**/480/600	1/3	172	0-85 PSIG	85	3/8	3/8	
30 KW	104	3.0	208/240/415**/480	1/3	172	0-85 PSIG	101	3/8	3/8	

* Each boiler model requires two (2) power supplies: Primary heating power and secondary control voltage. Nominal control voltage for cULus models is 120V, 60Hz, for non-UL/CSA models nominal control voltage is 220-240V, 50Hz. When boiler equipped with transformer option, only heating power supply required.

** No UL/CSA Approval

*** Single phase models available in 240V only

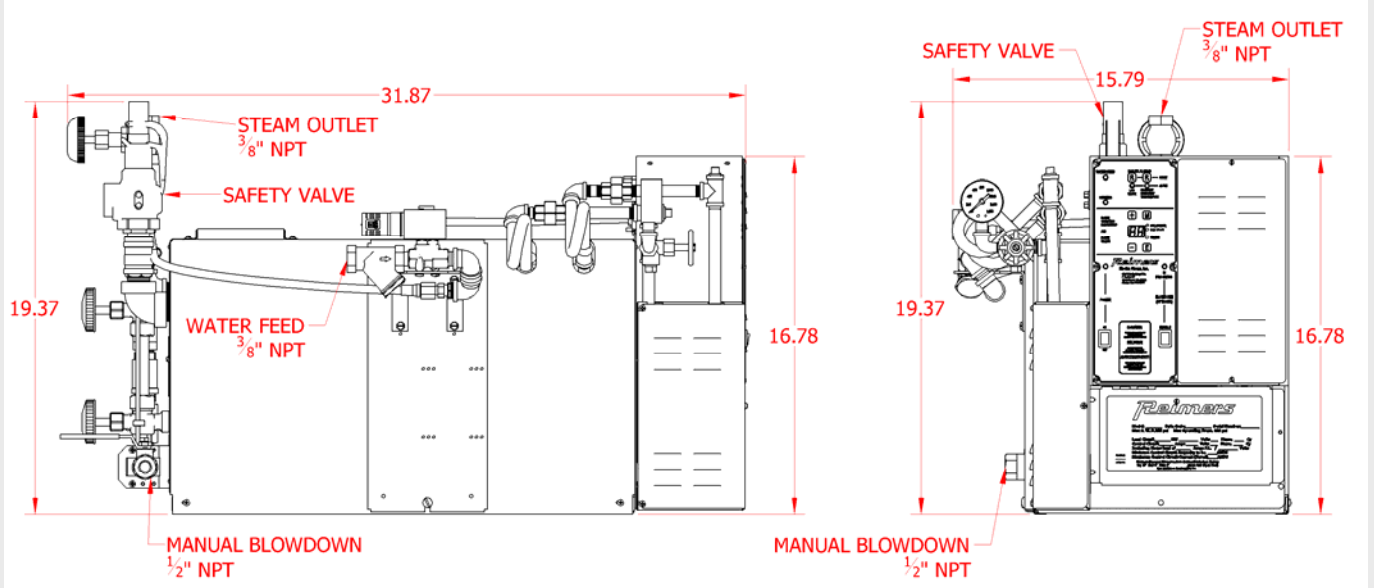
Model Number Key



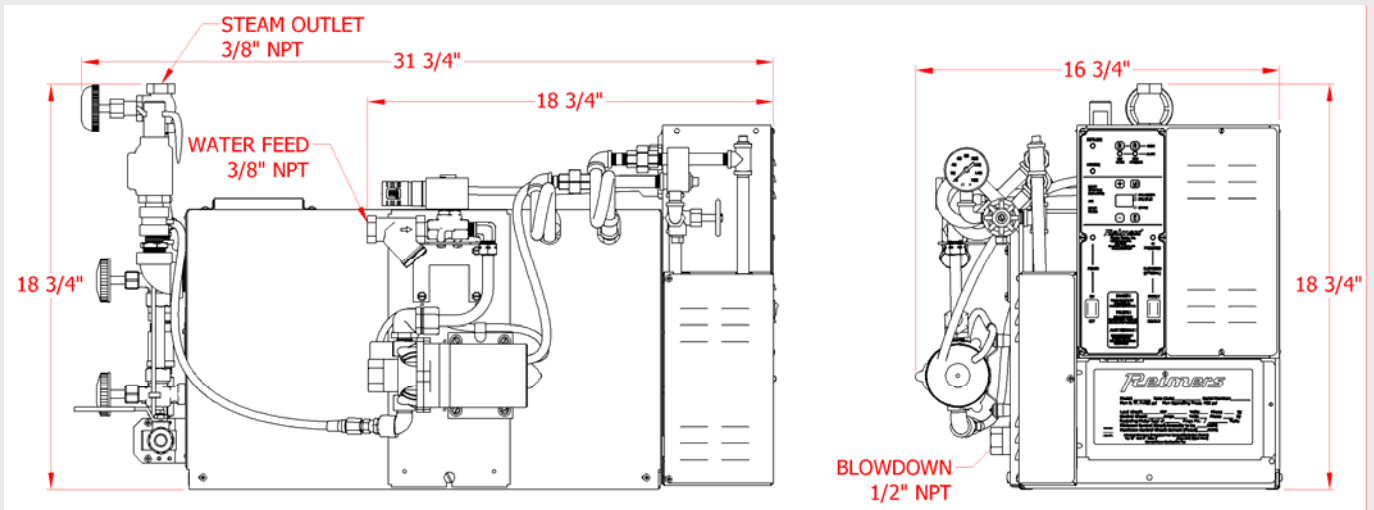
Example: RBHC20E3F = R-Series boiler with pump and condensate tank, 20kW heating power, power supply 240V, 3ph, safety valve set to 100psi.

Overall Dimensions

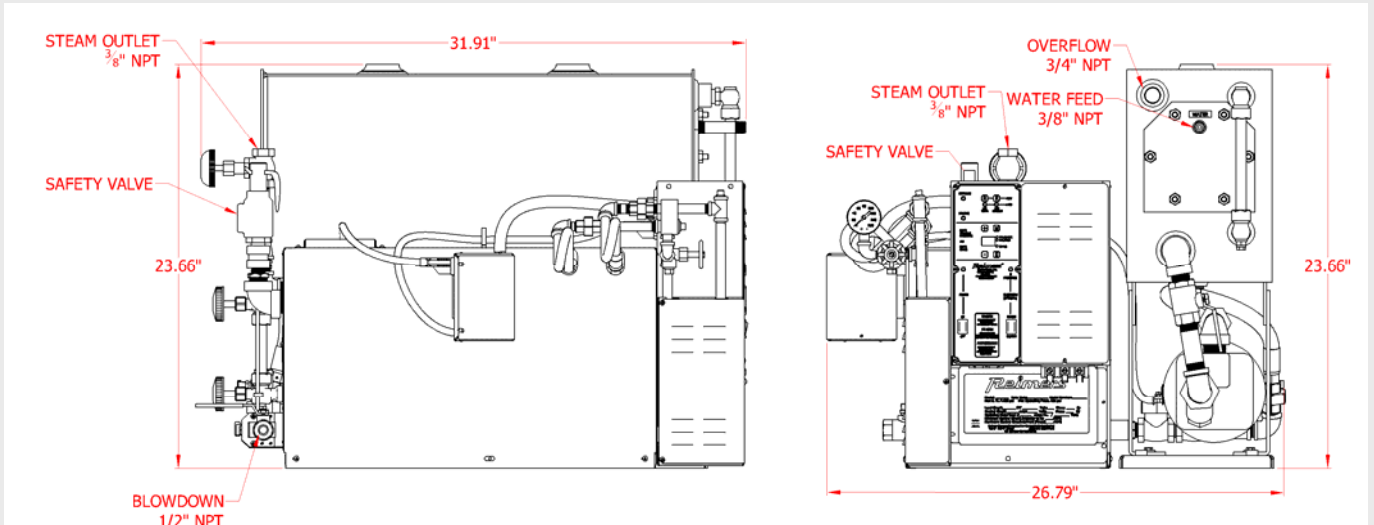
RB10 – RB30 Models



RBH10 – RBH30

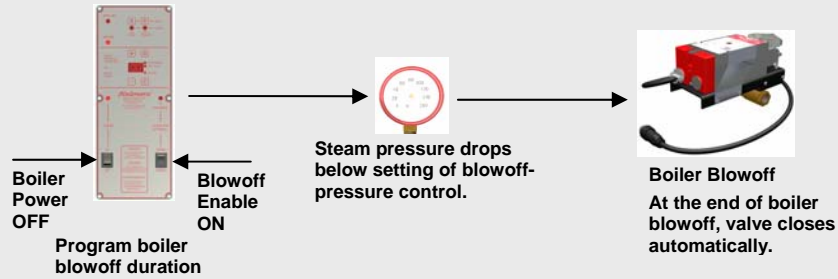


RBHC10 – RBHC30

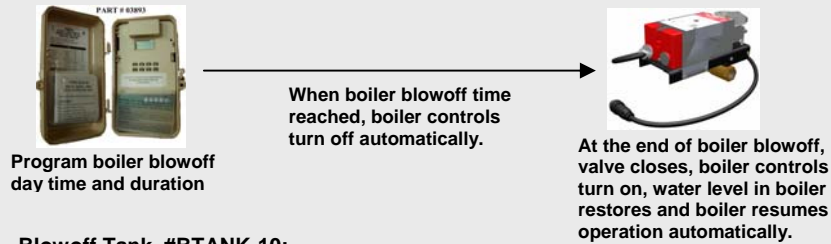


Optional Equipment & Accessories

1. Pressure Controlled Boiler Blowoff System (Automatic Flush & Drain), #OPT1016 :

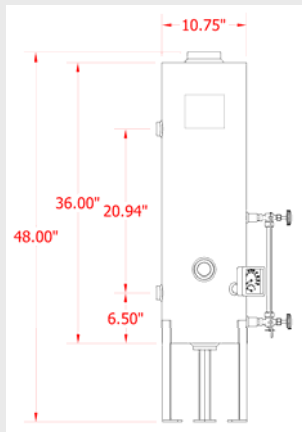


2. Timer Controlled Boiler Blowoff System, #OPT1001:



3. Blowoff Tank, #BTANK-10:

Boiler blowoff ensures long trouble free boiler operation. The safest means for boiler blowoff is a blowoff tank. Many State and local codes require the use of blowoff tanks.



Blowoff Tank Dimensional Drawing



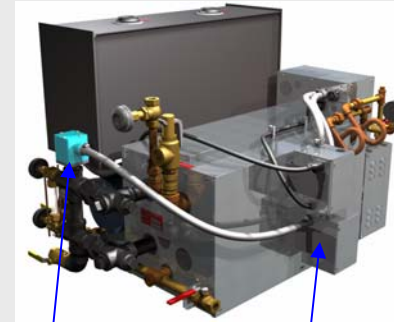
Typical Boiler Blowoff Piping

4. Control Voltage Transformer.

When using this option, only main power supply is required to operate boiler.

Boiler Voltage	Transformer Option Part Number	
	R - Series	RH- and RHC- Series
208V	OPT1009 - 208	OPT1011- 208RB
240V	OPT1009 - 240	OPT1011- 240RB
380V	OPT1009 - 380	OPT1011- 380RB
415V	OPT1009 - 415	OPT1011- 415RB
480V	OPT1009 - 480	OPT1011- 480RB
600V	OPT1009 - 600	OPT1011- 600RB

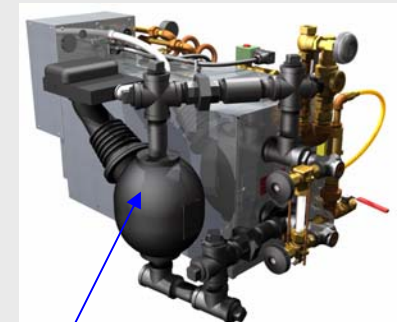
5. Auxiliary Low Water Cut-Off: #OPT1012



External water column with conductive probe fitting

Auxiliary low water cut-off module

#OPTMM150



External Water Column with McDonnell & Miller Model 150 Control

6. Boiler Wheel Set and Steam Gun for Cleaning Applications



Wheel Set: #OPT1019

Steam Gun: #20651

RB-Boiler model equipped with wheel set and power cord ensure that the steam boiler can easily be transported to the point of use. Ideal package for cleaning applications in wineries, large kitchens or any other steam cleaning application. The steam and detergent hose is part of the standard steam gun package.

7. Steam Jet Station #20845

Attach Steam Jet Station to RB-Boiler or on any other convenient location



8. Automatic Boiler ON/OFF, #OPT1017



Program timer to turn boiler on/off automatically

