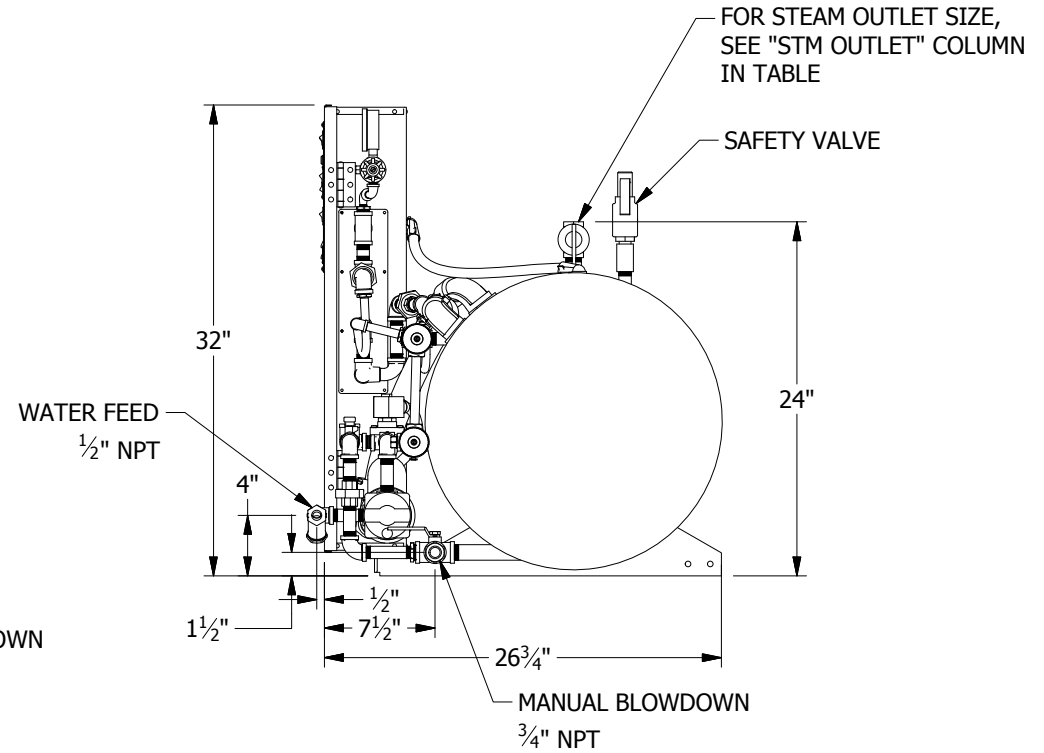
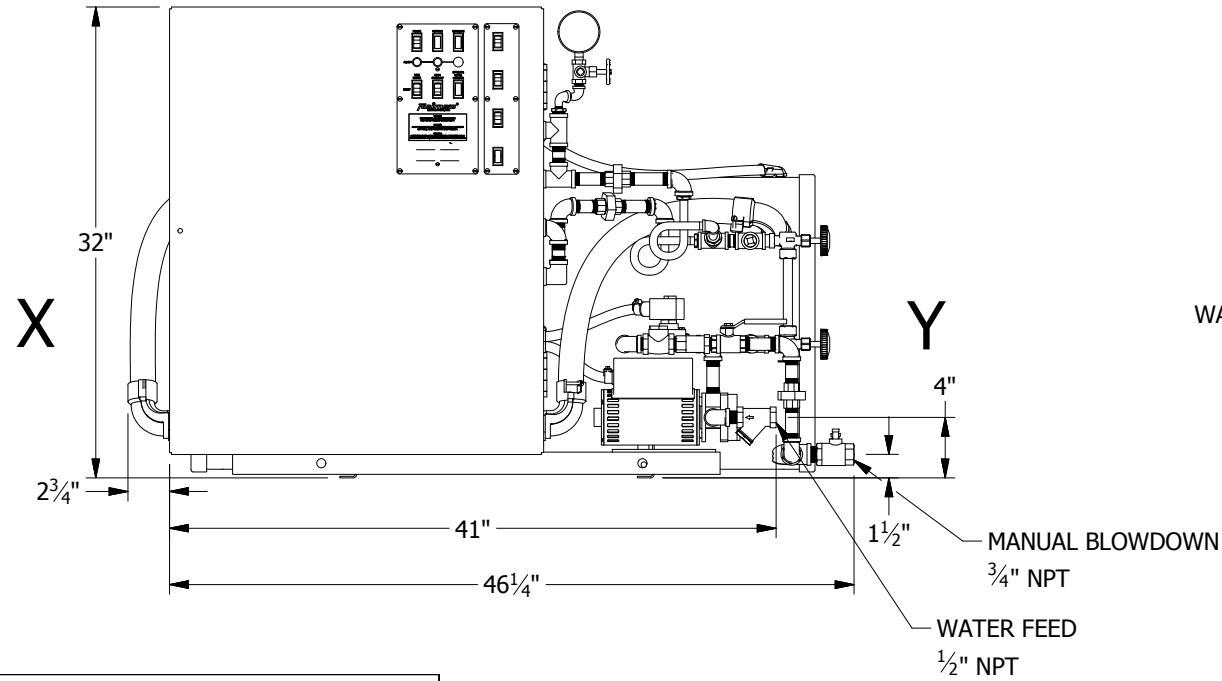
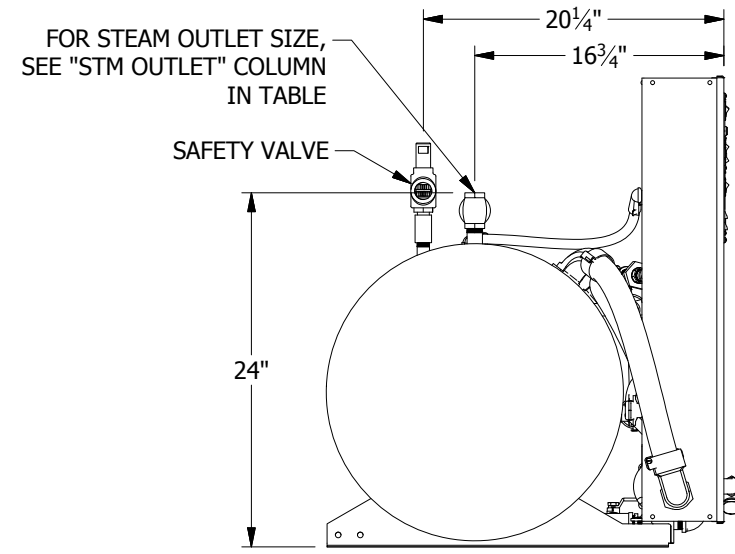
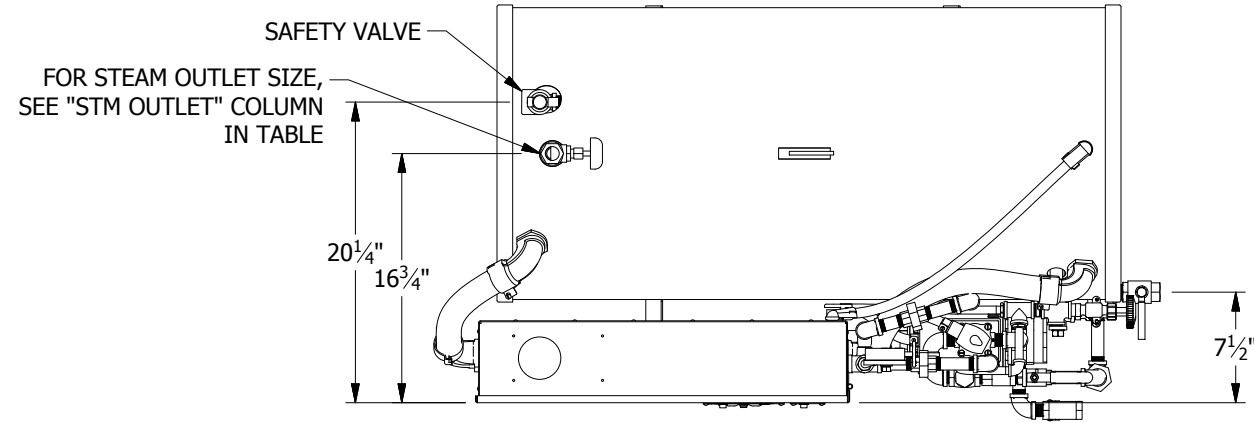


ELEMENT REMOVAL CLEARANCE		
	R 36-40	R 45-80
X	24"	24"
Y	-	24"



REIMERS ELECTRIC STEAM BOILERS									
R SERIES LOW & HIGH PRESSURE STEAM									
AVAILABLE WITH PUMP, AND CONDENSATE TANK									
100 PSIG DESIGN - RANGE 0-85 PSIG									
KW	# HR	BHP	VOLTAGE	PHASE	SHIP WT.	M BTU/HR	STM (NPT)		
							R/RH/RHC	LP	HP
36 KW	125	3.6	208/240/480	3-Jan	442/509/553	121	1	3/4	
40 KW	139	4	208/240/480	3	442/509/553	134	1	3/4	
45 KW	156	4.5	208/240/480	3	474/519/563	152	1 1/4	3/4	
54 KW	187	5.4	208/240/480	3	474/519/563	182	1 1/4	3/4	
60 KW	208	6	208/240/480	3	474/519/563	202	1 1/4	1	
72 KW	250	7.2	208/240/480	3	489/529/573	243	1 1/4	1	
80 KW	278	8	208/240/480	3	489/529/573	270	1 1/4	1	

ALL MODELS AVAILABLE WITH PUMP AND CONDENSATE TANKS

TOLERANCES		DRAWN	8/5/2009	Reimers® Electra Steam, Inc.	
FRACTIONS	±"	R. LOGUE <td>CHECKED</td> <td colspan="2">P.O. Box 37 Clear Brook VA 22624</td>	CHECKED	P.O. Box 37 Clear Brook VA 22624	
DECIMAL	±	QA		WWW.REIMERSINC.COM 540/662-3811 (Fax: 540/665-8101)	
ANGLE	±°	MFG		TITLE	
MATERIAL		APPROVED		BOILER R 36-80 W/ SOLENOID VALVE	
				SIZE	DWG NO
				B	RH 36-80
				SCALE 1/13	REV
					SHEET 1 OF 1